

# FIREFLEX® 1230

## The Latest Generation of Clean Agent Systems

The FIREFLEX® 1230 integrated system consists of a clean agent fire extinguishing system factory assembled in a cabinet. It integrates all the components necessary for a complete extinguishing system, including an optional releasing control panel.



### FEATURES

- simple and quick installation thereby reducing costs
- compact factory assembled and tested systems
- lockable doors to avoid unauthorized handling
- clean agent safe for occupants
- environmentally safe long-term solution
- available in multiple sizes
- serial number for easy reference
- FM Approved and UL/ULC Listed as an assembled unit
- available with seismic option up to 2 x 601 lbs cylinders



The **FIREFLEX® 1230** system uses **3M™ Novec™ 1230 Fire Protection Fluid**. This clean extinguishing agent is based on sustainable technology and is the only chemical agent currently available that not only meets current regulations but also those in the future regulatory framework. It is also the only extinguishing agent that allows a 1 to 1 cylinder replacements for existing halon systems.

Factory assembly of the **FIREFLEX® 1230** cabinets ensures that all components have been carefully integrated. All systems are fully programmed and tested at the factory which facilitates the onsite installation and commissioning process.

The **FIREFLEX® 1230** cabinets are available in various **SEVO™ 1230 FORCE500™** cylinder capacities—making them easily adaptable to the specific hazard configuration.

#### EXTINGUISHING AGENT

Typically used at concentrations from 4.5% to 6%, the **3M™ Novec™ 1230 Fire Protection Fluid** is a new generation of halon replacements, designed to mitigate concerns regarding occupant safety, extinguishing performance and the environment. Contrary to first generation HFC's, the **Novec™ 1230** fluid has key characteristics that define a clean extinguishing agent such as:

- ozone layer depletion potential of zero (ODP)
- global warming potential of 1 (GWP)
- atmospheric lifetime of only 5 days
- widest safety margin for occupants

The **FIREFLEX® 1230** integrated systems are thus adapted for use in any mission critical facility requiring a clean extinguishing agent that is not only fast and efficient, but also safe for people and the environment.

#### SEVO™ 1230 FORCE500™ TECHNOLOGY

The **FIREFLEX® 1230** system uses **SEVO™ 1230 FORCE500™** cylinders pressurized at 500 psi and designed for a high volume discharge rate in order to meet the rapid discharge requirements specified in the **NFPA 2001** standard. Discharge valves are of brass construction and are designed as per the pressure differential concept. They are also provided with an integrated pressure safety device, a pressure indicating gauge and an electric actuator.

The **SEVO™** system is UL/ULC Listed and FM Approved.

All systems are designed as per the **NFPA 2001** standard and in compliance with the limitations and instructions found in the manufacturer's design manual. All cylinders are factory-filled with the extinguishing agent and then pressurized with nitrogen allowing maximum flexibility at the time of installation. They are fabricated, tested and stamped according to D.O.T. 4BA500 or 4BW500 or TC specifications depending on their size and capacity.

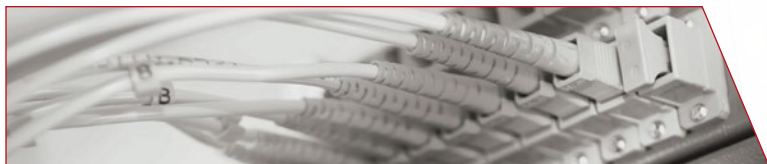
#### APPLICATIONS

- telecommunication centers
- server rooms and data storage
- control rooms
- art galleries & museums
- medical treatment centers & laboratories
- archives
- emergency diesel generators



SEVO™ 1230 CYLINDERS		
CYLINDER SIZE (LBS)	FILL CAPACITY (LBS)	MAX. VOLUME @ 4.5% (70° F)
40	16-40	941 ft³
76	31-76	1788 ft³
164	66-164	3859 ft³
322	129-322	7577 ft³
601	241-601	14167 ft³
850	366-854	20098 ft³





### REMOTE-CONTROLLED OPTION

The remote-controlled option provides a junction box where all supervisory and control devices, are prewired to a set of terminals for field wiring to a releasing control panel to be provided by others. The system's electric actuator must be compatible and listed with the releasing control panel.

### SEISMIC OPTION

The **FIREFLEX® 1230** seismic option OSHPD pre-approved under OSP-0342-10 up to a  $S_{DS}(g)$  of 2.22 is available with or without panel up to 2 X 601 lbs cylinders on the 46" cabinet.

### QUALIFICATIONS

The **FIREFLEX® 1230** seismic option is tested and qualified in accordance with:

- International Building Code, 2006-2009 Edition
- California Building Code, 2013 Edition
- ICC-ES AC-156, 2010 Edition

Seismic testing is for equipment being installed above the grade of the building structure, including roof top; with a maximum calculated  $S_{DS}$  of 2.212 for Soil Class D. Following seismic testing, a visual evaluation and functional testing was repeated on the seismic test items to verify their integrity and operability.

### INTEGRATED RELEASING CONTROL PANEL OPTION

The optional releasing control panel integrated in the **FIREFLEX® 1230** cabinet is Potter's model PFC-4410RC. It is provided with a menu-driven programming, including a specific program assigned at the factory. The panel is compatible with many types of fire alarm and supervisory devices such as linear heat detectors, spot type heat and smoke detectors, waterflow and release indicators, low and high air pressure switches, manual pull stations and abort switches.

The control panel also includes an alphanumeric display with 2 lines of 16 characters describing all the system conditions, as well as a set of red and yellow LED lamps individually indicating each of the alarm, trouble and supervisory conditions of the system. Easy to operate control buttons are also provided to activate and operate the system's various functions.

FIREFLEX® 1230 CABINET CYLINDER CAPACITY						
CABINET WIDTH (IN.)	CYLINDER SIZE (LBS)					
	40	76	164	322	601	850
24*	1	1	1	1	1	—
36*	2	2	2	—	—	—
46*	—	—	—	2	2	—
52	—	—	—	—	—	2

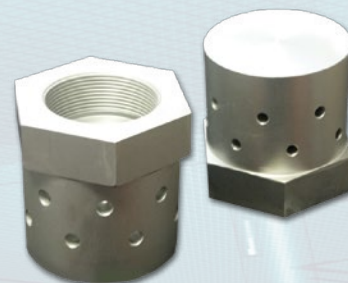
\* Available with seismic option.

### FIREFLEX® 1230 CABINETS

The **FIREFLEX® 1230** cabinets are of the freestanding type and are made of robust 14 gauge steel with a corrosion resistant fire red paint finish, polyester powder-coated and oven-baked on a phosphate base. Cabinets are also provided with one or two locked frontal doors, reducing space requirements for ease of installation and maintenance. Furthermore, all doors are provided with a neoprene gasket to reduce vibrations and can be removed without special tools for easy access.

### SEVO™ DISCHARGE NOZZLES

The **SEVO™** discharge nozzles are designed to provide a complete and rapid vaporization of the **Novac™ 1230** fluid as well as properly distribute the agent within the protected space. Standard nozzles are made of aluminum and are available in various sizes, including ½", 1", 1½", 2" and 2½". Both 180° and 360° models cover a maximum area of 32' x 32' with a maximum height of 16'-4" (FM) or 14'-0" (UL/ULC).



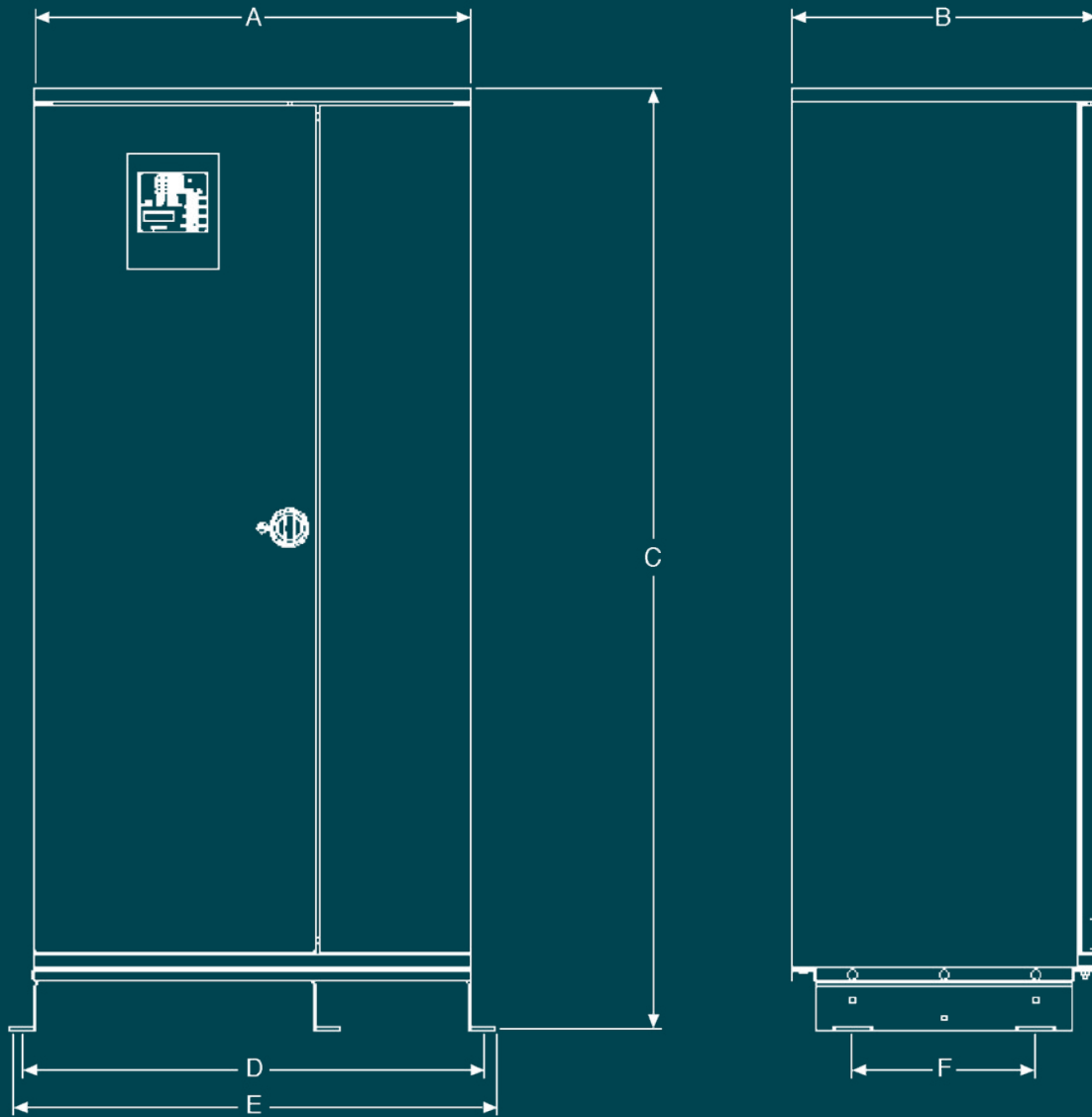


**Control Fire Systems**

63 Advance Rd.  
 Building "A"  
 Toronto, Ontario  
 Canada M8Z 2S6  
 Tel: (416) 236-2371  
 Fax: (416) 233-6814

[www.controlfiresystems.com](http://www.controlfiresystems.com)

**FIREFLEX® 1230 CABINET DIMENSIONS**



System Size	A	B	C	D	E	F
24"	23"	25"	77"	27"	29"	15"
36"	35 <sup>3</sup> / <sub>4</sub> "	25"	77"	37 <sup>3</sup> / <sub>4</sub> "	39 <sup>3</sup> / <sub>4</sub> "	15"
46"	46"	25"	77"	48"	50"	15"
52"	52"	31"	81"	54"	56"	21"



Entreprise certifiée  
**ISO-9001**  
 Certified Company

FM-07QV-0-17E  
 Printed in Canada

1935 Lionel-Bertrand Blvd., Boisbriand (QC) Canada J7H 1N8 | Phone: 450-437-3473  
 Toll Free: 1-866-347-3353 | Fax: 450-437-1930 | Email: [info@fireflex.com](mailto:info@fireflex.com)



[WWW.FIREFLEX.COM](http://WWW.FIREFLEX.COM)